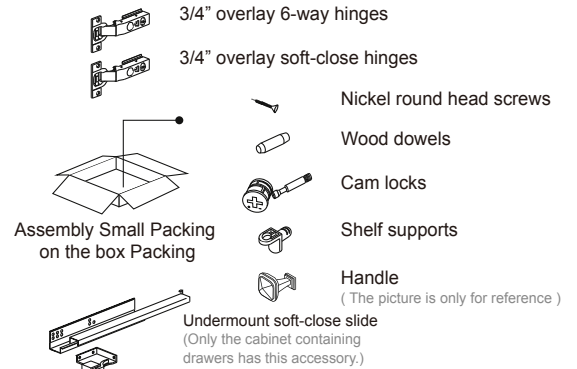
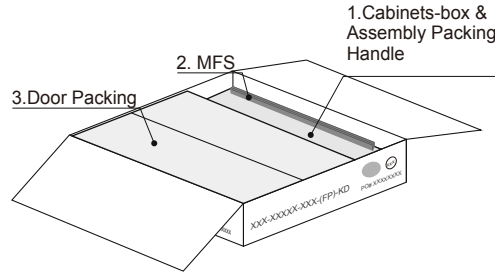
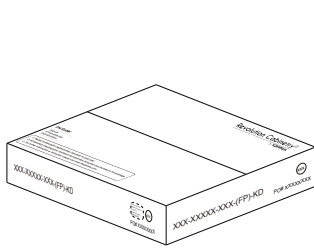


## KITCHEN BASE BLIND CORNER CABINET

### Ready to Assemble — Assembly Instruction

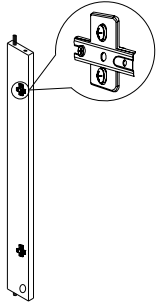
-everything you need is included in this package-

#### PACKAGE LIST

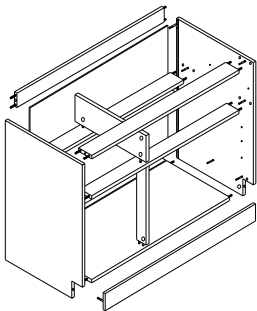


#### ASSEMBLY STEPS

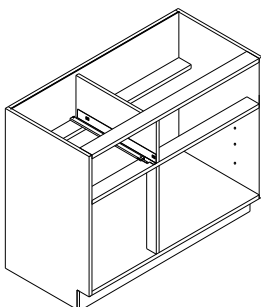
**Step 1:** Install the soft-close hinge plate on upper holes of the pillar, install the 6-way hinge plate on lower holes of the pillar.



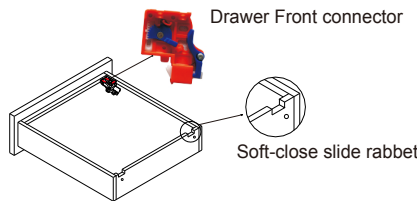
**Step 2:** Assemble the cabinet using cam locks and wood dowels. Start by screwing in all the male ends of the cam locks and inserting the wooden dowels. When the sides, bottom base and braces are loosely connected, tighten everything with the female part of the cam locks. Finish by sliding the back panel into its groove.



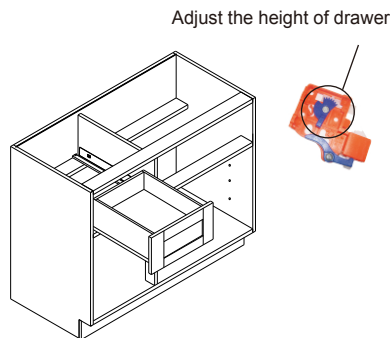
**Step 3:** Attach the Undermount soft-close slides onto the side panels using the pre-drilled holes and the nickel round head screws.



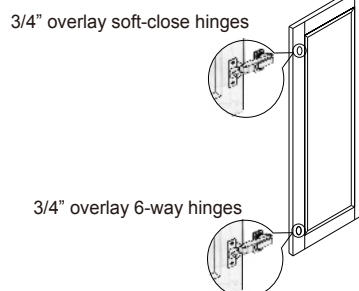
**Step 4:** Assemble the drawers and install the drawer front connector on the underside of the bottom panels of the drawers, secure with short screws.



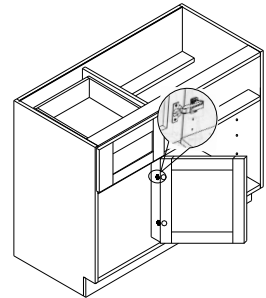
**Step 5:** Install the drawers. First, extend the arms of the drawer slides and place drawer on top of the extended arms. There is a notch cut into the bottom of each side of the drawer where the arms rest. Reach under and pull the arms to meet the drawer front connector. The arms should slide forward until a "click" is felt. This is a secur connector. After that, a small lever on the drawer front connector can be used to make small adjustment to correct clearance.



**Step 6:** Install the 3/4" overlay soft-close hinges in the upper holes of the doors; Install the 3/4" overlay 6-way hinges in the lower holes of the doors.



**Step 7:** Connect the doors to the box, hinges on the door panels snap into the hinges on the side pillar.



**Step 8:** Install the shelf supports at the desired height then place shelves on top of the supports. Adjust the hinges to ensure that the clearance for all doors is the same. Finally, check the firmness and stability of the cabinet tightening the cam locks as necessary.

